



BULLETIN 2

DZŪKIJA 2025 – 3 DAYS

<https://dbSPORTAS.lt/lt/varz/2024204>

INVITATION

ORGANIZERS, INFORMATION

VšĮ “Forest stadiums“

Event director: Edgaras Voveris

e-mail: edgarasvoveris@gmail.com

Tel.: +370 655 07007 (EN),

PROGRAMME

FOOT - Orienteering 3 days

Day / date	Event	Event center opening	Start time
DAY 1 August 22, 2025	STAGE 1 – LONGER MIDDLE	15:00	17.00 - 19.00
DAY 2 August 23, 2025	STAGE 2 – MIDDLE Awards	10:00	11.00 - 13.15 From 14.30
DAY 3 August 24, 2025	STAGE 3 – MIDDLE Awards	9.30	10.00 - 12.30 From 14.15

MAPS AND TERRAIN

Start 1, Zervynos (Competition Center coordinates 54.115620, 24.456990)

Longer middle course. The area is interesting in that there are not many small details, but the predominant medium-relief forms are very similar everywhere... Therefore, the entire course will be challenging with parallel situations... The forest is occasionally mixed with juniper and small underbrush, which obscures the visibility of the terrain. It will be interesting to vary running speeds and experience this wonderful natural cradle.

Map author: Audrius Smilgius, 2018, updated in 2025; course setter: E. Voveris.

Map scale: 1:10,000, 1:7,500, contour interval 5 meters.

Winner's time: **50 minutes.**



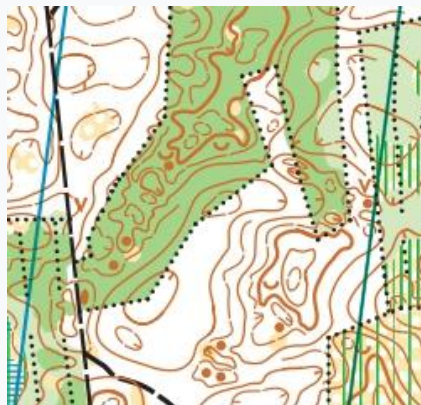
Start 2, Pauosupė (Competition Center coordinates 54.108018,24.558129)

Middle course. The specificity of orienteering here involves many different small hills, mounds, dips, hollows, little noses, and everything is sometimes in young forest stands with limited visibility and passability. However, the forest itself is a pine forest or a young re-growing pine forest, so there will be no grass, nettles, or other vegetation that might cause discomfort. In fact, where visibility is limited, running itself is not particularly difficult.

The map and terrain are virtually brand new for orienteering. The map author is Gintas Kvietkus, and the course setter is Edgaras Voveris.

Map scale: 1:10,000, 1:7,500, contour interval 2.5 meters.

Winner's time: **35-40 minutes**.



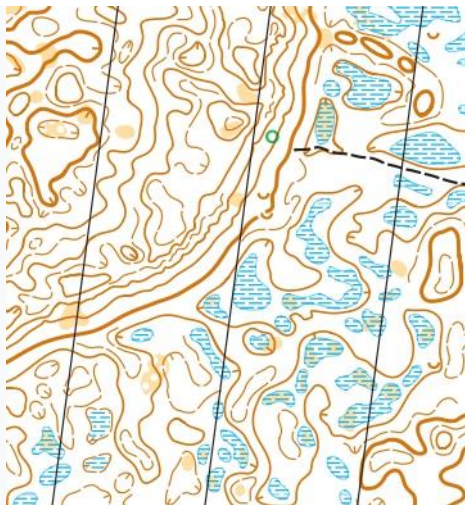
Start 3, Čepkeliai (Competition Center coordinates 54.019784, 24.412606)

Middle course. The specificity of the area – various terrain forms that are fantastic and interesting – beautiful small, similar dry bogs... A beautiful forest, beautiful nature, and orienteering will take place in this area for the first time.

Map author: Gintas Kvietkus, 2025; course setter: E. Voveris.

Map scales: 1:10,000 and 1:7,500, contour interval 2.5 meters.

Winner's time: **35-45 minutes**.



CLASSES

Competition will be held in these classes:

MW-8, MW10-14N , M-12, W-12, M-14, W-14, M-16, W-16, M-18, W-18, **M21E**, **W21E**, M21S (short), W21S (short),

MW21N (woman and men category **beginners together**), M-35, W-35, M-40, W-40, M-45, W-45, M-50, W-50, M-55, W-55, M-60, W-60, M65, W- 65, M-70, W-70, M-75, W-75, M-80, W-80.....

P.S. MV8 – Children girls and boys can run it with parents.

Open course possible - OPEN1 and OPEN2

REGISTRATION, ENTRY FEES AND PAYMENT

On-line entry form: <https://dbsportas.lt/lt/varz/2024204>

You can also send an entry by e-mail edgarasvoveris@gmail.com (name, surname, club, country, class, SI card number, and other necessary information).

Attention: M – a man, W – a women.

Starting fee for registration until July 1st.

For **M/W 21-65**, 3 days – 48 Eur, start for a separate day 17 Eur.

For **M/W 70-80**, 3 days – 40 Eur, start for a separate day 15 Eur

For **M/W 12-18**, 3 days - 22 Eur, start for a separate day 8 Eur.

For **MW8**, 3 days - 15 Eur, start for a separate day 5 Eur

Starting fee for registration after July 1st. and until August 1st.

For **M/W 21-65**, 3 days – 56 Eur, start for a separate day 20 Eur.

For **M/W 70-80**, 3 days – 46 Eur, start for a separate day 18 Eur.

For **M/W 12-18**, 3 days – 23.5 Eur, start for a separate day 8 Eur.

For **MW8**, 3 days - 15 Eur, start for a separate day 5 Eur

Starting fee for registration after August 1st and until August 18th

For **M/W 21-65**, 3 days – 61 Eur, start for a separate day 20 Eur.

For **M/W 70-80**– 3 days – 51 Eur, start for a separate day 18 Eur.

For **M/W 12-18** – 3 days – 23.5 Eur, start for a separate day 9 Eur.

For **MW8**, 3 days - 18 Eur, start for a separate day 6 Eur

Attention, when registering after August 18th, or even on the day of the competition, the starting fee for adults per day – 25 Eur, for M/W 70-80 - 20 Eur, for M/W 12-18 - 10 Eur, for MW-8 children per day start - 7 Eur.

There will still be an opportunity for unregistered participants to start OPEN, these are the OPEN1 and OPEN2 tracks, where the price is 15eur per day for adults and 10eur for children.

SI card rental for children is 1eur per day, SI rental for all adults is 2eur per day.

Attention! The start fees here do not include the Lithuanian Orienteering Federation calendar fee, when registering in the program you will already see the full start fee.

Payment can be made in cash at the start places or by advance transfer **to the following account:**

VšĮ „Forest stadiums“

Įm. kodas: 306971444

Adresas: Vilnius, Pranciškaus Smuglevičiaus g. 1, LT 08333

A/S LT247044090112445411

Bankas: AB SEB Bank

Banko kodas: 70440

PRIZES

Prizes will be awarded to the BEST competitors in each class for each stage.

Prizes to the top 3 competitors will be determined by summing up the total score of the 3 best results in points.

One start will have 1000 points for the winners and so on, we will use the www.dbtopas.lt points system. In

groups of up to 3 participants, we will award only the winners in the amount.

PUNCHING SYSTEM SPORTident and AIR+.

SPORT Ident SI card rent: M/V 8-18 – 1 € per day, other classes – 2 € per day. Number of SIAC cards for rent for foot-orienteering is limited. An intention to rent a SIAC card **MUST** be specified in the comments section of the entry form. In case of lost or not-returned card, the competitor must refund, accordingly, SI or SIAC card price.

Results will be available to follow live on screen and online at www.dbtopas.lt, where there will also be **LIVE RESULTS**. **Maps of all courses** will be available at www.livelox.com, where you will also be able to upload your runs from your watches.

ACCOMMODATION

Attention! There will be a possibility of camping in tents by the lake in Marcinkonys (only toilets will be there as a plus) Coordinates: 54.057764,24.430504.

You are very welcome...)