

BULLETIN 2

NIDA 2025 – 3 DAYS

INVITATION

The organizers are pleased to invite you to the 3-days orienteering event in Nida, Lithuania. The event will be in finest forests by the Baltic see. Participants, we invite you not only to compete, but spend a good and healthy time in the Nida as well.

And we hope you can spend good time in Nida for your Orienteering.

ORGANIZERS, INFORMATION

Event director: Edgaras Voveris

e-mail: edgarasvoveris@gmail.com

Tel.: +370 655 07007 (EN),

VšĮ "Forest stadiums" and Neringa Sport School

PROGRAMME

FOOT - Orienteering 3 days + prologue

| Day / date | Event | Event center opening | Start time |
|---|--|----------------------|------------------------------------|
| Prologue – Training June 12, 2025 | Extended Night Forest Sprint | 21.00 | 21.30 – 23.45 |
| DAY 1 June 13, 2025 | STAGE 1 – LONGER SPRINT | 15:00 | 17.00 - 20.00 |
| DAY 2 June 14, 2025 | STAGE 2 – CLASSIC DISTANCE Awards | 10:00 | 10.30 - 13.15 From 14.15 |
| DAY 3 June 15, 2025 | STAGE 3 – LONGER MIDDLE Awards | 9.30 | 10.00 - 13.00 From 14.15 |

MAPS AND TERRAIN

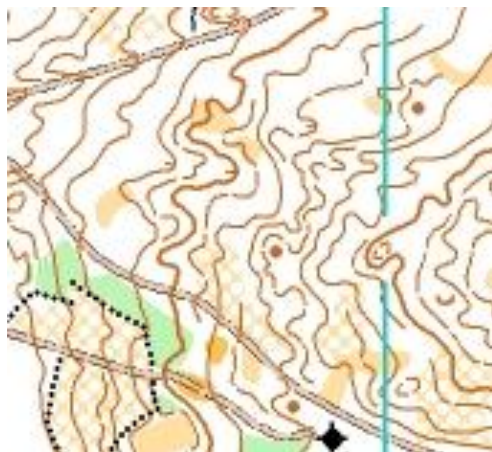
Prologue, Nida lighthouse, Urbo hill. (EC coordinates 55.302357, 20.996930)

Extended night forest sprint, the start can be without prior registration, you arrive and start here. The starting price is 8eur for adults and 5eur for schoolchildren and students. Payment can be made in advance by bank transfer or on the spot.

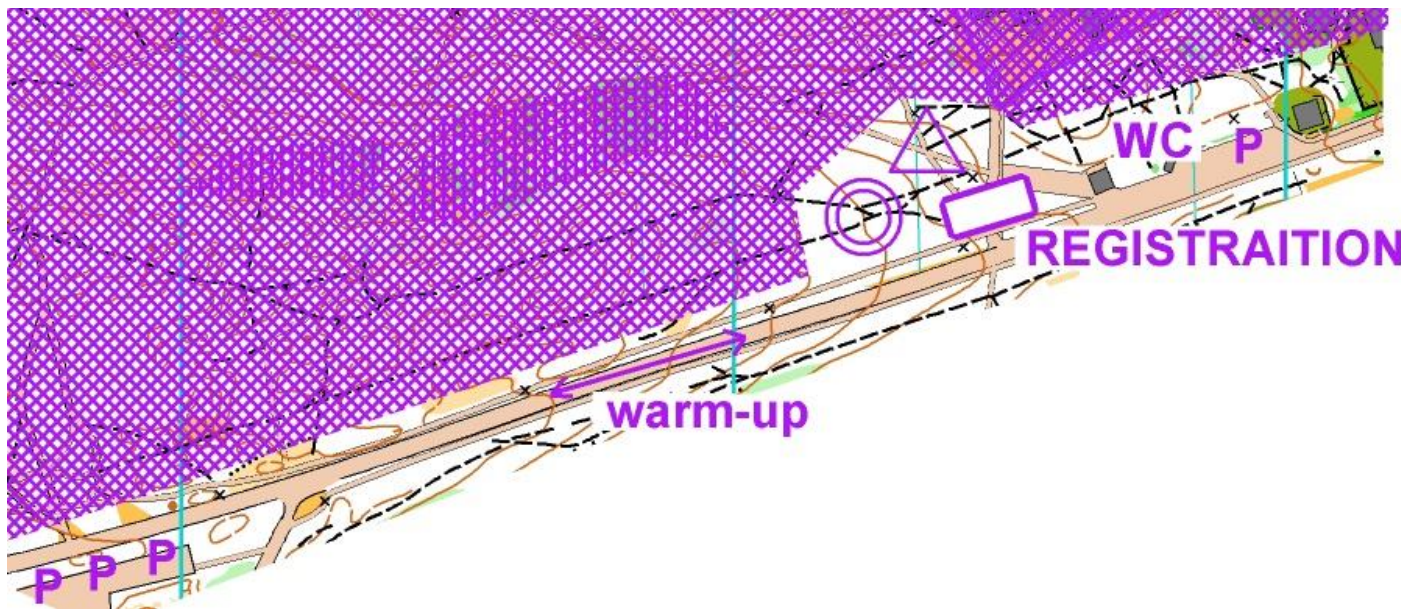
Map maker Egidijus Kukenys and Edgaras Voveris 2025, as well as the tracks.

Map scale 1:5000, H – 2,5 m.

The time of the winners is 20 - 30min.



Prologue DAY, 2025.06.12 TRAINING DAY SCHEDULE, START 21.30 - 23.45

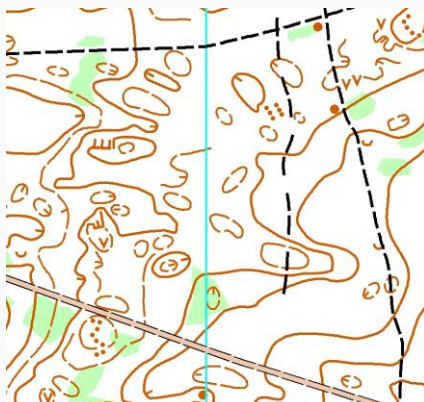


Start 1, NIDA, street district with the adjacent forest area (Event Center coordinates 55.309499,21.009728)

Longer Sprint. Where the run will be with variations between houses and of course, as always, it will be extremely interesting for the OS to enter the fantastic area near this place. It will be interesting to alternate running speeds and be in the perfect cradle of nature. Competition Center near the Kursiu Lagoon.

The author of the map is Edgaras Voveris 2025, as well as the tracks. Map scale 1:4000, 1:3000, H - 2.5 m.

The time of the winners is 25 - 30 minutes.



1 DAY, 2025.06.13 COMPETITION SCHEDULE, START 17.00 - 20.00

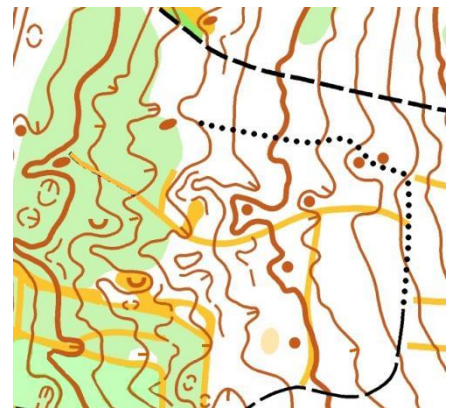
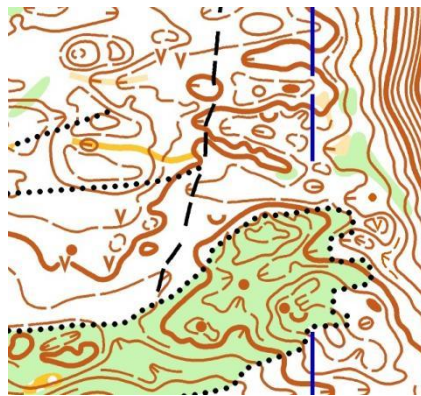
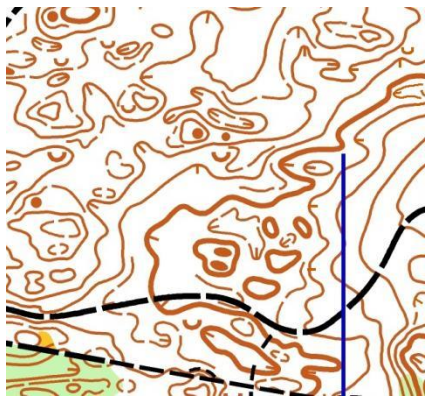


Start 2, Juodkrante (Competition Center coordinates 55.559192,21.103178)

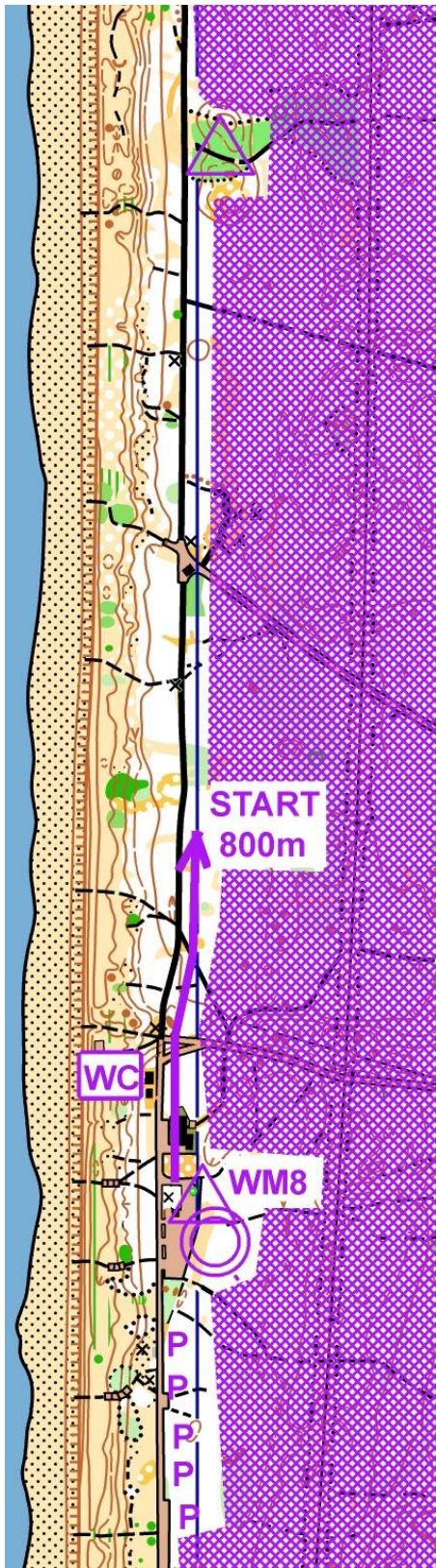
Classic race. sloping landforms and green denser forest will be, in a word, a fantastic corses awaits you here...) We hope it will be completely interesting and even a good challenge really...)

The author of the map is R. Sereika and S.Kireilis 2022, it will be updated for the competition in 2025, the corses is E. Voveris. Map scales 1:10 000 and 1:7500, h - 2.5 m.

The time of the winners is 60 minutes.



2 DAY, 2025.06.14 COMPETITION SCHEDULE, START 10.30 - 13.15



Start 3, Pervalka, (Competition Center coordinates 55.420754,21.059752)

Longer Middle corse. The specifics of the orienteering terrain are Scandinavian-style: a flat area dotted with numerous small hills and knolls, many of which are very similar to each other. Different types of vegetation will create a wide range of visual experiences and will offer very diverse orienteering enjoyment.

The Event Centre and car parking will be located near the seaside. Participants will need to walk 1200–1500 meters to reach the start and finish area, and then return to the Event Centre to download their SI cards. This setup offers a great opportunity to relax on the beach after completing the course and stay there until the awards ceremony.

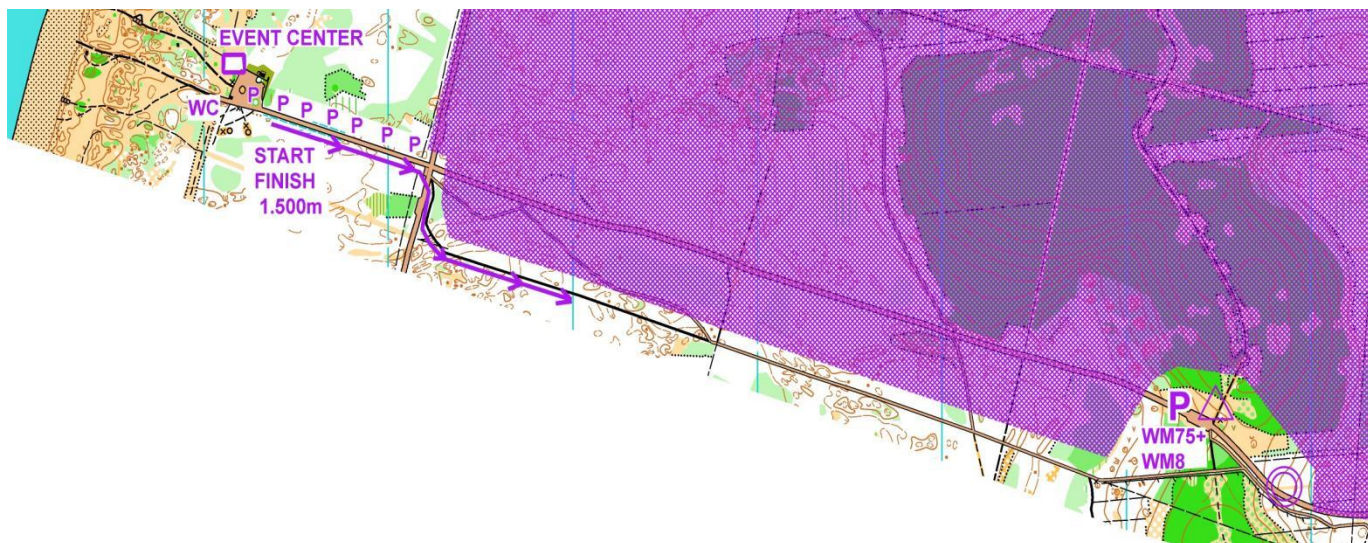
For the convenience of MW75+ and WM8 participants, parking will be available close to the start and finish area.

Apparently, the author of the map will still be, and the tracks will be by Edgaras Voveris. Map scale 1:7500, H - 2.5 m.

The time of the winners is 45 minutes.



3 DAY, 2025.06.15 COMPETITION SCHEDULE, START 10.00 - 13.00



Additional information for participants:

Running in the forest with football boots is prohibited.

Areas marked in purple on the competition maps indicate forbidden zones – please follow the standard orienteering map symbols in the forest.

Information about the map scales for each age group on each day will be available near the start tent.

CLASSES

Competition will be held in these classes:

MW-8, M-10, **MW-10/14N**, M-12, W-12, M-14, W-14, M-16, W-16, M-18, W-18, **M21E**, **W21E**, M21S (short), W21S

(short),

MW21N (woman and men category **beginners together**), M-35, W-35, M-40, W-40, M-45, W-45, M-50, W-50, M- 55, W-55, M-60, W-60, M65, W- 65, M-70, W-70, M-75, W-75, M-80, W-80.....

P.S. **MW8** and **MW-10/14N**– Children girls and boys can run it with parents.

Open course possible - OPEN1 and OPEN2.

REGISTRATION, ENTRY FEES AND PAYMENT

On-line entry form: <https://dbsportas.lt/lt/varz/2024106>

You can also send an entry by e-mail edgarasvoveris@gmail.com (name, surname, club, country, class, SI card number, and other necessary information).

Attention: M – a man, W – a women.

Starting fee for registration until May 1st.

For **M/W 21-65**, 3 days – 45 Eur, start for a separate day 17 Eur.

For **M/W 70-80**, 3 days – 42 Eur, start for a separate day 15 Eur

For **M/W 12-18**, 3 days - 22 Eur, start for a separate day 8 Eur.

For **M/W 16-18**, 3 days – 25 Eur, start for a separate day 8,5 Eur

For **MW8**, 3 days - 15 Eur, start for a separate day 5 Eur

Starting fee for registration until June 2nd.

For **M/W 21-65**, 3 days – 55 Eur, start for a separate day 20 Eur.

For **M/W 70-80**, 3 days – 45 Eur, start for a separate day 18 Eur.

For **M/W 12-18**, 3 days – 25 Eur, start for a separate day 8,5 Eur.

For **M/W 16-18**, 3 days – 30 Eur, start for a separate day 10 Eur

For **MW8**, 3 days - 15 Eur, start for a separate day 5 Eur

Starting fee for registration until June 9th.

For **M/W 21-65**, 3 days – 60 Eur, start for a separate day 20 Eur.

For **M/W 70-80**, 3 days – 55 Eur, start for a separate day 18 Eur.

For **M/W 12-18**, 3 days – 27 Eur, start for a separate day 8,5 Eur.

For **M/W 16-18**, 3 days – 32 Eur, start for a separate day 11 Eur

For **MW8**, 3 days - 15 Eur, start for a separate day 5 Eur

Starting fee for registration after June 9th and until competition day.

For **M/W 21-65**, 3 days – 70 Eur, start for a separate day 25 Eur.
For **M/W 70-80**– 3 days – 60 Eur, start for a separate day 20 Eur.
For **M/W 12-18** – 3 days – 32 Eur, start for a separate day 11 Eur.
For **M/W 16-18**, 3 days – 37 Eur, start for a separate day 13 Eur
For **MW8**, 3 days - 18 Eur, start for a separate day 6 Eur

There will still be an opportunity for unregistered participants to start OPEN, these are the OPEN1 and OPEN2 tracks, where the price is 15eur per day for adults and 10eur for children.

SI card rental for children is 1eur per day, SI rental for all adults is 2eur per day.

Attention! The start fees here do not include the Lithuanian Orienteering Federation calendar fee, when registering in the program you will already see the full start fee.

Payment you can make by advance transfer to the following account:

VsĮ "Forest stadiums"

Code: 306971444

AB SEB Bank

Bank code 70440

SWIFT code:(BIC) CBVILT2X

Account: LT247044090112445411

Or you can also pay in cash at the competition place.

PRIZES

Prizes will be awarded to the BEST competitors in each class for each stage.

Prizes to the top 3 competitors will be determined by summing up the total score of the 3 best results in points. One start will have 1000 points for the winners and so on, we will use the www.dbtopas.lt points system. In groups of up to 3 participants, we will award only the winners in the amount.

PUNCHING SYSTEM SPORTident and AIR+.

SPORT Ident SI card rent: M/V 8-18 – 1 € per day, other classes – 2 € per day. Number of SIAC cards for rent for foot-orienteering is limited. An intention to rent a SIAC card MUST be specified in the comments section of the entry form. In case of lost or not-returned card, the competitor must refund, accordingly, SI or SIAC card price.

START FORMAT FOR PARTICIPATION IN THE COMPETITION

Free Start... You will be able to freely plan your own starting time. The start window will be open for 3 hours, and there will be **no official start list or time slots**. Participants can come to the start area at any time within the window, pick up their course descriptions (legends) at the start tent, and **start at a time of their own choosing**.

The **official start** will be marked by punching the **SI START unit**. Starts will be spaced no closer than **1 minute apart** per course. After punching the start unit, you will take your course map and begin your run.

Start officials will be present at the start area and ready to assist you in any situation.

After finishing your course, punch the **SI FINISH unit**, and then your split times and total time will be printed out immediately.

Results will be available live on screen and online at www.dbtopas.lt, including **LIVE RESULTS**.

For classes **M21E, W21E, M35, and M40**, there will be **GPS tracking broadcast online**.

You are very welcome...)

