



**BULLETIN 3**

**DZŪKIJA 2025 – 3 DAYS**

<https://dbSPORTAS.lt/lt/varz/2024204>

## **INVITATION**

## **ORGANIZERS, INFORMATION**

VšĮ “Forest stadiums“

Event director: Edgaras Voveris

e-mail: [edgarasvoveris@gmail.com](mailto:edgarasvoveris@gmail.com)

Tel.: +370 655 07007 (EN),

## **PROGRAMME**

### **FOOT - Orienteering 3 days**

Day / date	Event	Event center opening	Start time
<b>DAY 1</b> August 22, 2025	<b>STAGE 1 – LONGER MIDDLE</b>	15:00	16.00 - 19.00
<b>DAY 2</b> August 23, 2025	<b>STAGE 2 – MIDDLE</b> <b>Awards</b>	10:00	10.30 - 13.15 <b>From 14.15</b>
<b>DAY 3</b> August 24, 2025	<b>STAGE 3 – MIDDLE</b> <b>Awards</b>	9.30	10.00 - 13.00 <b>From 14.15</b>

## **MAPS AND TERRAIN**

## **Start 1, Zervynos (Competition Center coordinates 54.115620, 24.456990)**

**Longer middle course.** The terrain is interesting because there are not many small details, but the prevailing medium-sized landforms are very, very similar everywhere... Therefore, the whole orienteering race will be unusual with many parallel situations. The forest in some places has a low undergrowth of junipers, which obscures the visibility of the terrain's features. It will be interesting to vary running speeds and enjoy this wonderful cradle of nature.

Map author: Audrius Smilgius, 2018, updated in 2025. Courses by E. Voveris.

**Map scale 1:10,000 – MW21E, MW21S, MW18, MW16, MW35, MW40, M45, M50, M55, M60, OPEN1.**

**For all other classes, the scale is 1:7,500, contour interval – 5 m.**

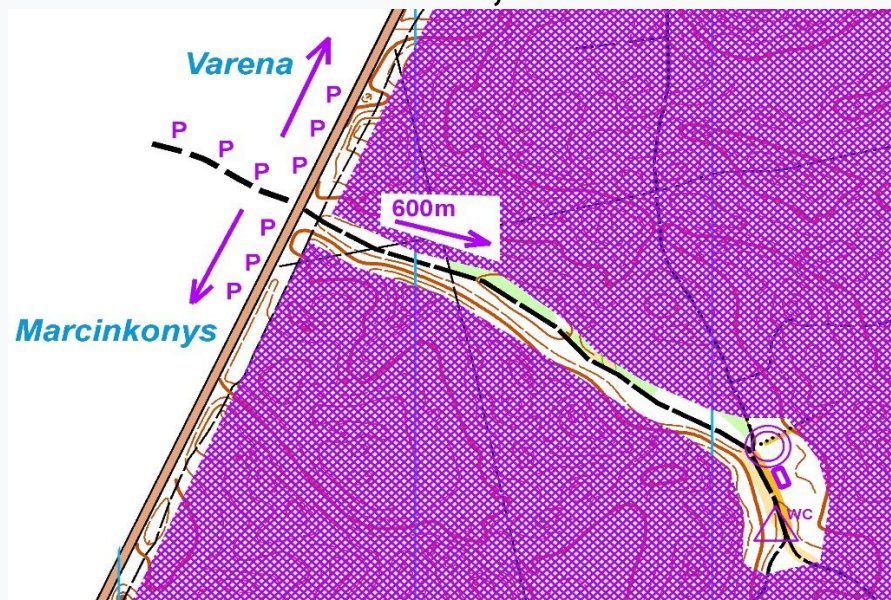
Winners' expected time: 35–45 minutes.

Attention! Drinking water will be available, but please bring your own container for refilling.

Start according to the start list, but **free start** from the SI base **for groups: MW8, WM10–14N, MW21N, and of course OPEN1, OPEN2, and OPEN3.**



# FIRST DAY OF COMPETITION, 2025.08.22 COMPETITION SCHEDULE



**Start 2, Pauosupė (Competition Center coordinates 54.108018,24.558129)**

**Middle course.** The specificity of the terrain is the abundance of various small hills, knolls, mounds, depressions, reentrants, spurs – and all of this sometimes lies within young forest with limited visibility and runnability. However, the forest itself is mainly pine or regenerating pine stands, so there will be no nettles or other unpleasant vegetation. In fact, where the visibility is limited, the running itself is not difficult.

The map and terrain are practically brand new for orienteering.

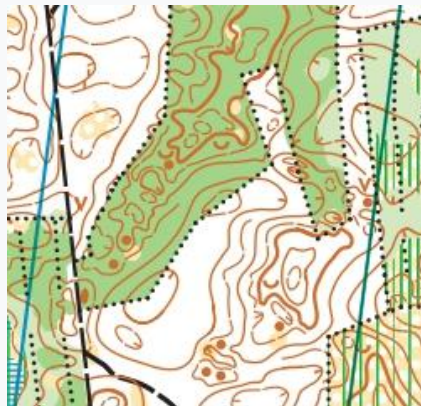
Map author: Gintas Kvietkus.

Courses: Edgaras Voveris.

**Map scale 1:10,000 – MW21E, M21S, MW18, M35, M40, M45, M50, OPEN1.**

**For all other classes, the scale is 1:7,500, contour interval – 2.5 m.**

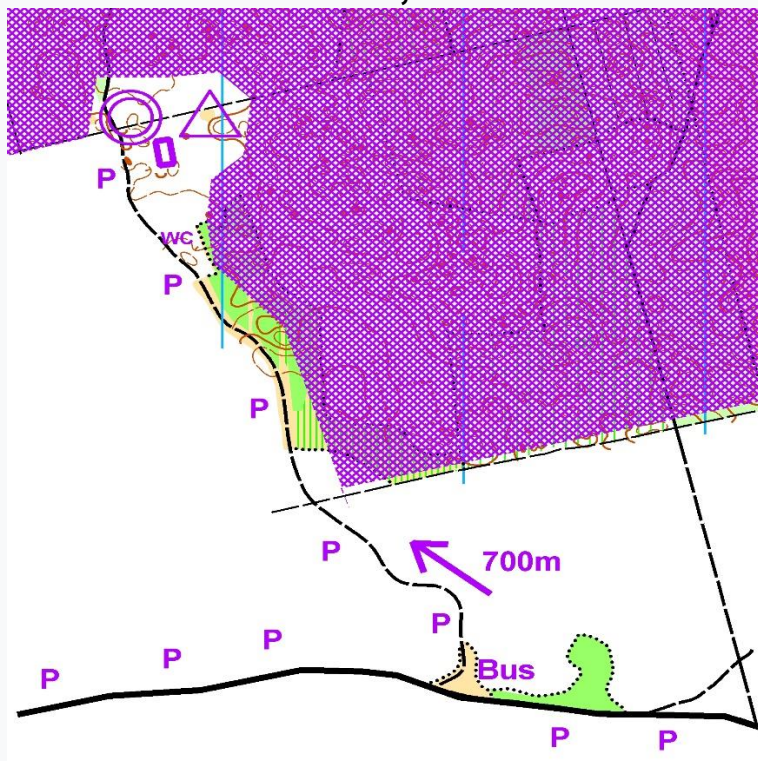
Expected winners' time: 30–45 minutes.







## SECOND DAY OF COMPETITION, 2025.08.23 COMPETITION SCHEDULE



**Start 3, Čepkeliai (Competition Center coordinates 54.019784, 24.412606)**

**Middle course.** Terrain specifics – a variety of landforms, both fantastic and interesting – beautiful small and very similar dry marshes. A beautiful forest, wonderful nature, and orienteering will take place in this area for the very first time.

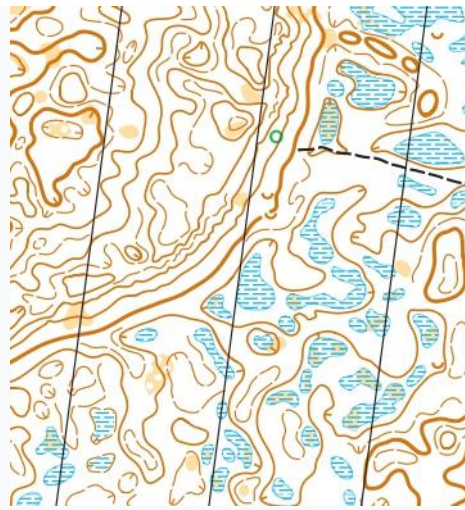
Map author: Gintas Kvietkus, 2025.

Courses: E. Voveris.

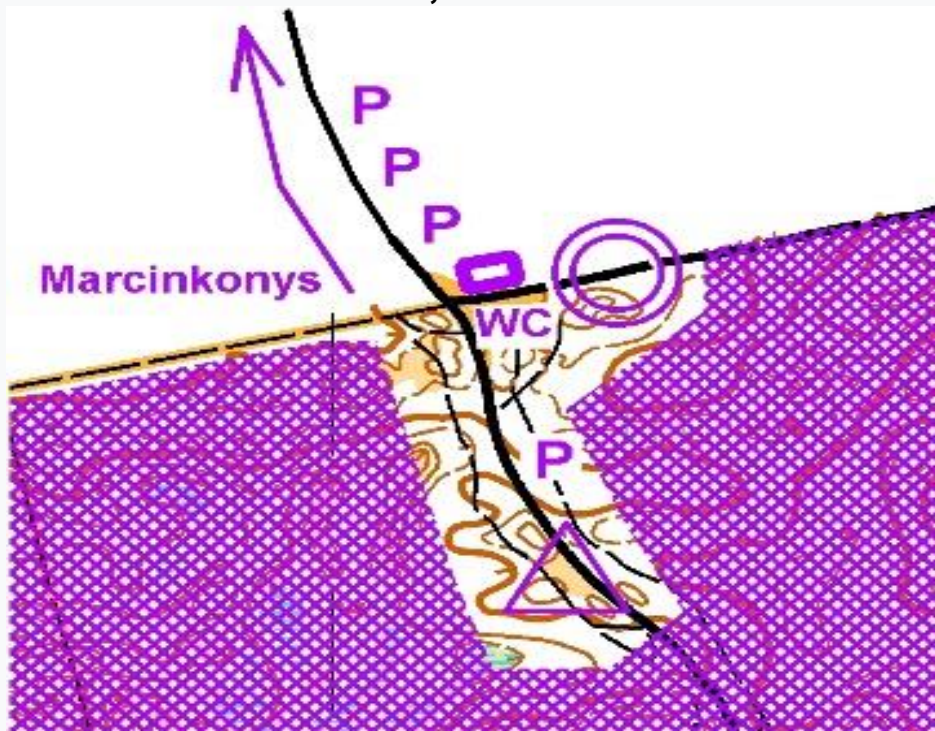
**Map scale 1:10,000 – MW21E, M21S, MW18, M35, M40, M45, M50, OPEN1.**

**For all other classes, the scale is 1:7,500, contour interval – 2.5 m.**

Expected winners' time: ~35 minutes.



## THIRD DAY OF COMPETITION, 2025.08.24COMPETITION SCHEDULE



## CLASSES

Competition will be held in these classes:

**MW-8**, MW10-14N , M-12, W-12, M-14, W-14, M-16, W-16, M-18, W-18, **M21E**, **W21E**, M21S (short), W21S (short),

**MW21N** (woman and men category **beginners together**), M-35, W-35, M-40, W-40, M-45, W-45, M-50, W-50, M-55, W-55, M-60, W-60, M65, W- 65, M-70, W-70, M-75, W-75, M-80, W-80.....

P.S. MV8 and MW10-14N – Children - girls and boys can run it with parents.  
**Open course possible** - OPEN1, OPEN2 and OPEN3.

## REGISTRATION, ENTRY FEES AND PAYMENT

**On-line entry form:** <https://dbsportas.lt/lt/varz/2024204>

You can also send an entry by e-mail [edgarasvoveris@gmail.com](mailto:edgarasvoveris@gmail.com) (name, surname, club, country, class, SI card number, and other necessary information).

**Attention: M – a man, W – a women.**

### **Starting fee for registration until July 1st.**

For **M/W 21-65**, 3 days – 48 Eur, start for a separate day 17 Eur.

For **M/W 70-80**, 3 days – 40 Eur, start for a separate day 15 Eur

For **M/W 12-18**, 3 days - 22 Eur, start for a separate day 8 Eur.

For **MW8**, 3 days - 15 Eur, start for a separate day 5 Eur

### **Starting fee for registration after July 1st. and until August 1st.**

For **M/W 21-65**, 3 days – 56 Eur, start for a separate day 20 Eur.

For **M/W 70-80**, 3 days – 46 Eur, start for a separate day 18 Eur.

For **M/W 12-18**, 3 days – 23.5 Eur, start for a separate day 8 Eur.

For **MW8**, 3 days - 15 Eur, start for a separate day 5 Eur

### **Starting fee for registration after August 1st and until August 18th**

For **M/W 21-65**, 3 days – 61 Eur, start for a separate day 20 Eur.

For **M/W 70-80**– 3 days – 51 Eur, start for a separate day 18 Eur.

For **M/W 12-18** – 3 days – 23.5 Eur, start for a separate day 9 Eur.

For **MW8**, 3 days - 18 Eur, start for a separate day 6 Eur

**Attention, when registering after August 18th, or even on the day of the competition, the starting fee for adults per day – 25 Eur, for M/W 70-80 - 20 Eur, for M/W 12-18 - 10 Eur, for MW-8 children per day start - 7 Eur.**

**There will still be an opportunity for unregistered participants to start OPEN, these are the OPEN1 and OPEN2 tracks, where the price is 15eur per day for adults and 10eur for children.**

**SI card rental for children is 1eur per day, SI rental for all adults is 2eur per day.**

**Attention! The start fees here do not include the Lithuanian Orienteering Federation calendar fee, when registering in the program you will already see the full start fee.**

**Payment** can be made in cash at the start places or by advance transfer **to the following account:**

VšĮ „Forest stadiums“

Įm. kodas: 306971444

Adresas: Vilnius, Pranciškaus Smuglevičiaus g. 1, LT 08333

A/S LT247044090112445411

Bankas: AB SEB Bank

Banko kodas: 70440

## PRIZES

Prizes will be awarded to the BEST competitors in each class for each stage.

Prizes to the top 3 competitors will be determined by summing up the total score of the 3 best results in points.

One start will have 1000 points for the winners and so on, we will use the [www.dbtopas.lt](http://www.dbtopas.lt) points system. In

groups of up to 3 participants, we will award only the winners in the amount.

## **PUNCHING SYSTEM SPORTident and AIR+.**

SPORT Ident SI card rent: M/V 8-18 – 1 € per day, other classes – 2 € per day. Number of SIAC cards for rent for foot-orienteeing is limited. An intention to rent a SIAC card **MUST** be specified in the comments section of the entry form. In case of lost or not-returned card, the competitor must refund, accordingly, SI or SIAC card price.

**Results will be available to follow live** on screen and online at [www.dbtopas.lt](http://www.dbtopas.lt), where there will also be **LIVE RESULTS**. **Maps of all courses** will be available at [www.livelox.com](http://www.livelox.com), where you will also be able to upload your runs from your watches.

## **ACCOMMODATION**

Attention! There will be a possibility of camping in tents by the lake in Marcinkonys (only toilets will be there as a plus) Coordinates: 54.057764,24.430504.

**You are very welcome...)**